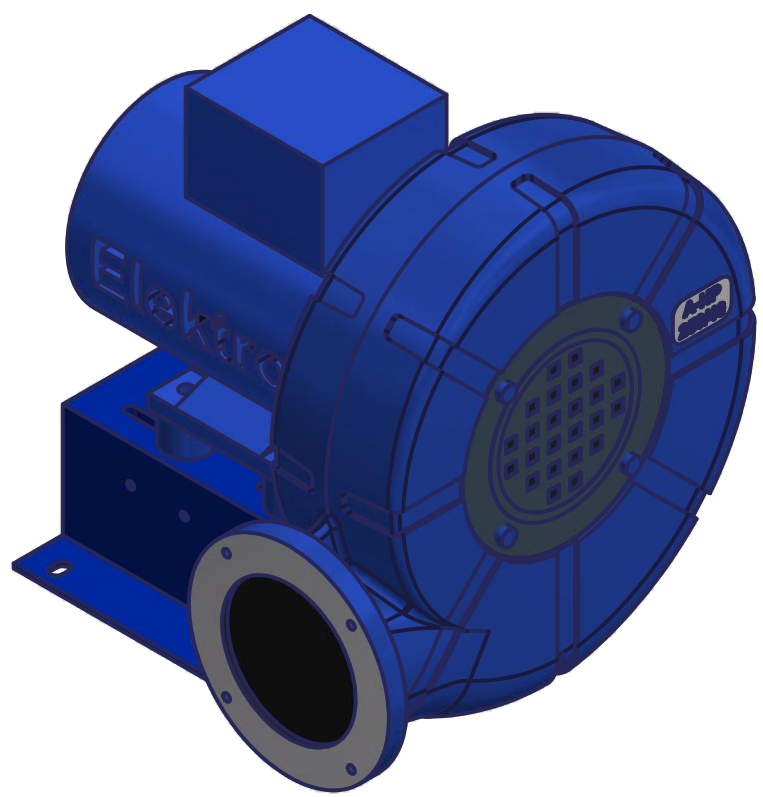
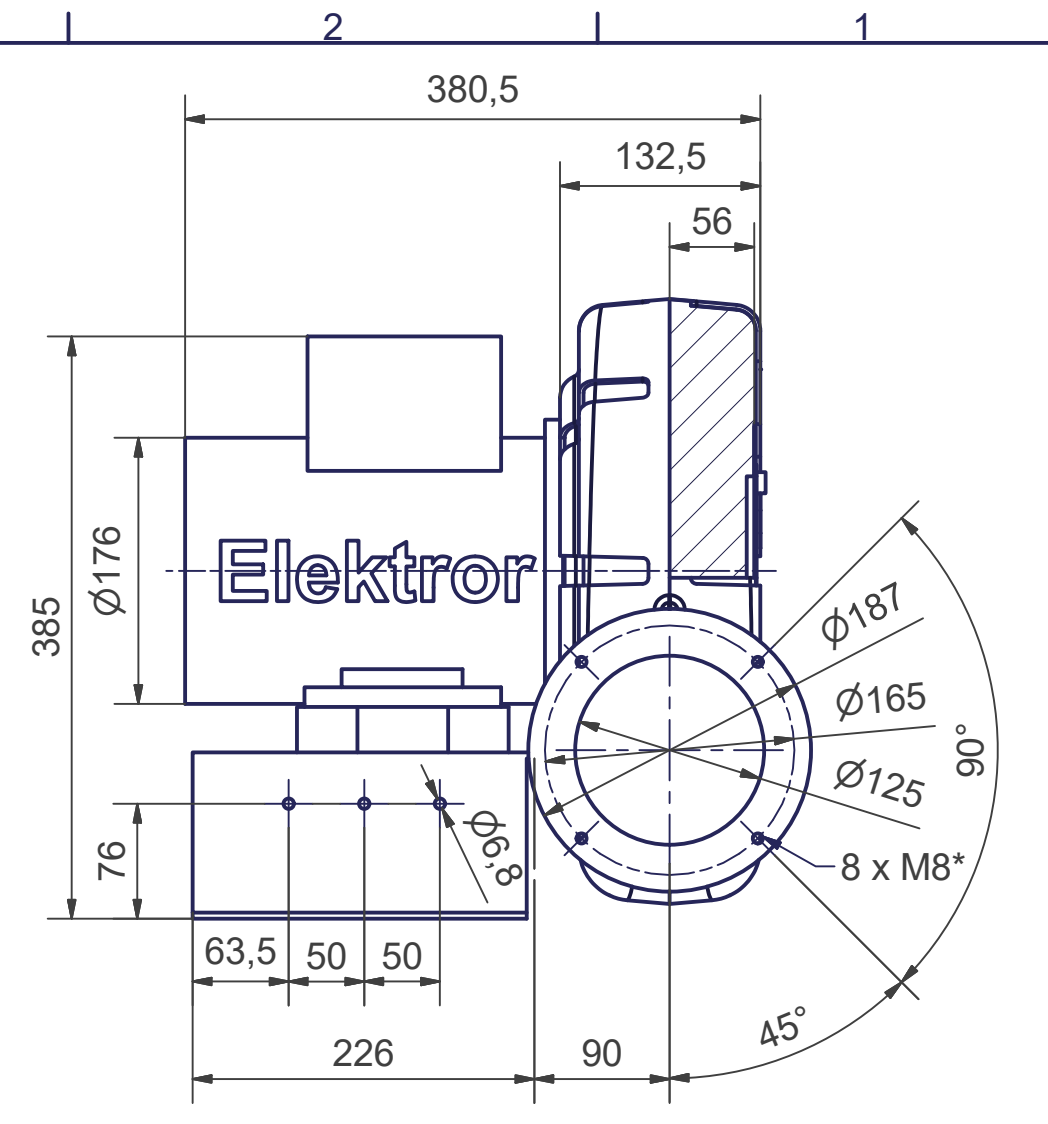
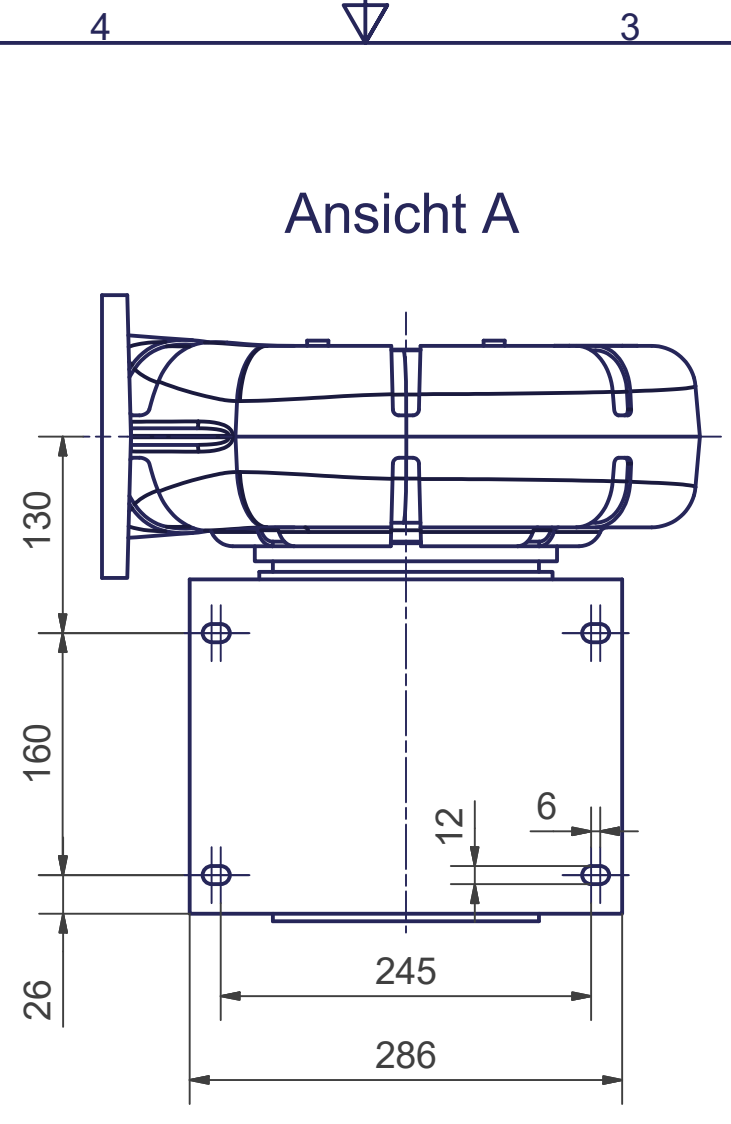


↑ Ansicht A



\*Kann als Durchgangsloch für M6 Schrauben verwendet werden  
 \*Can be used as through-hole for M6 screw

Maße in mm - unverbindlich. Änderungen vorbehalten.  
 Dimensions in mm - subject to modifications. Changes reserved.

Revision		-	
Without our permission, this drawing may not be copied or reproduced, nor communicated or made accessible to third parties, in particular competitors. Illegal use by the recipient or third party has civil and criminal consequences. All dimensions are in mm and non-binding. Technical changes reserved.			
general tolerances DIN ISO 2768-mk		workpiece edges DIN ISO 13715	
		outer edges $-0,2$ inner edges $+0,4$	
		KG	120,9
raw material	weight unit	weight	material-no.
ISO 8015: 2011	scale	date	name
	1 : 5	proc. 24.06.2020	SCHMIDT
A3	audited	28.07.2020	BARBOTJK
<b>A-HP 250/40 - 140/3,0 - LG270 (Ar)</b>			1137629-CDD-000
			index B
SAP DType IDWMN		replaced by	
		replaced	